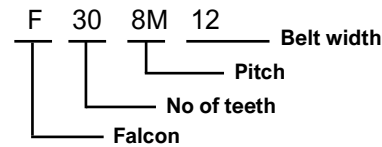


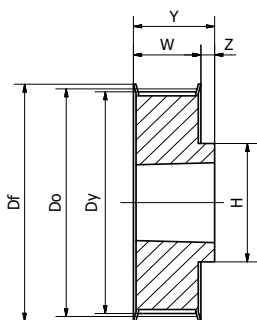


Item no. example

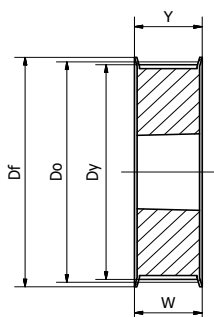


These pulleys have been designed to fit the Falcon Pd belts, but they are also compatible with our synchrochain and polychain belts. The pulleys are treated with surface process that gives a greater resistance against oxidizing agents. Available on request, pitches 8M and 14M. The pulleys are designed for assembly with taper bushing.

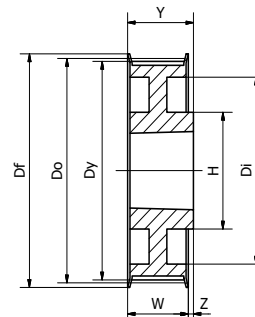
F8M12																
Item no [Jens S]	Profile	Number of teeth	Belt width [mm]	Execution	Do [mm]	Dy [mm]	Df [mm]	U [mm]	W [mm]	H [mm]	Z [mm]	Y [mm]	Taper bush	Max bore [mm]	Weight [kg]	Material
F228M12	GTD	22	12	6	56,02	54,42	62	-	22	-	-	22	1008	25	0,42	Cast iron
F258M12	GTD	25	12	6	63,66	62,06	67	-	22	-	-	22	1108	28	0,43	
-	GTD	26	12	6	66,21	64,61	73	-	22	-	-	22	1108	28	-	
-	GTD	27	12	6	68,75	67,15	76	-	22	-	-	22	1108	28	-	
F288M12	GTD	28	12	6	71,6	69,7	77	-	22	-	-	22	1108	28	0,6	
F308M12	GTD	30	12	6	76,39	74,79	84	-	22	-	5	22	1108	28	0,67	Steel
F328M12	GTD	32	12	2	81,49	79,89	88	-	20	66	5	25	1210	35	0,77	
F348M12	GTD	34	12	2	86,58	84,98	94	-	20	72	5	25	1610	42	0,88	
F368M12	GTD	36	12	2	91,67	90,07	98	-	20	75	5	25	1610	42	1,02	
-	GTD	37	12	2	94,22	92,62	100	-	20	77	5	25	1610	42	-	
F388M12	GTD	38	12	2	96,77	95,17	104	-	20	82	5	25	1610	42	1,15	Cast iron
F408M12	GTD	40	12	2	101,86	100,26	108	-	20	89	5	25	1610	42	1,19	
-	GTD	41	12	2	104,41	102,81	111	-	20	89	5	25	1610	42	-	
-	GTD	42	12	2	106,95	105,35	113	-	20	91	5	25	1610	42	-	
-	GTD	44	12	2	112,05	110,45	121	-	20	104	12	32	2012	50	-	
F458M12	GTD	45	12	2	114,59	112,99	121	-	20	104	12	32	2012	50	1,76	
F488M12	GTD	48	12	2	122,23	120,63	129	-	20	105	12	32	2012	50	2,16	
F508M12	GTD	50	12	2	127,32	125,72	131	-	20	105	12	32	2012	50	2,16	
F568M12	GTD	56	12	2	142,6	141	149	-	20	105	12	32	2012	50	2,83	
F608M12	GTD	60	12	2	152,79	151,19	158	-	20	110	12	32	2012	50	3,24	
F648M12	GTD	64	12	9	162,97	161,37	168	140	20	110	12	32	2012	50	3,51	Cast iron
-	GTD	67	12	9	170,6	169,0	175	147	20	110	12	32	2012	50	-	
-	GTD	72	12	9	183,35	181,75	191	158	20	110	12	32	2012	50	-	
F758M12	GTD	75	12	9	190,99	189,39	202	164	20	110	12	32	2012	50	4,57	
F808M12	GTD	80	12	9	203,72	202,12	216	178	20	110	12	32	2012	50	5,13	
F908M12	GTD	90	12	9A	229,18	227,58	-	204	20	110	12	32	2012	50	6,37	



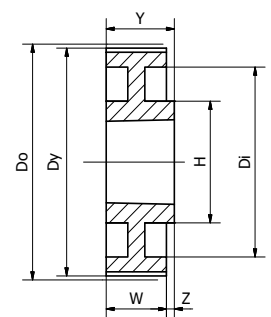
2



6

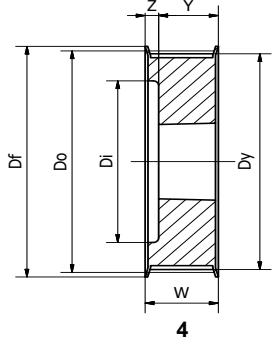
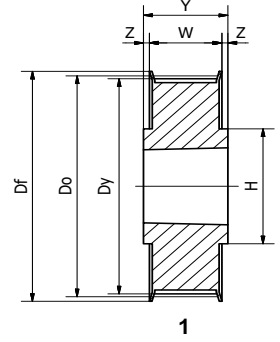


9

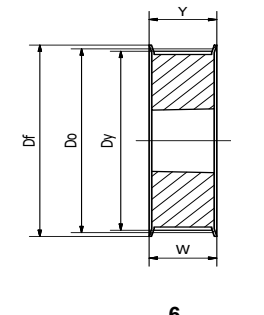
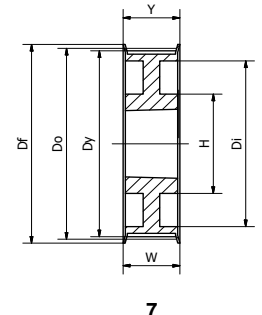
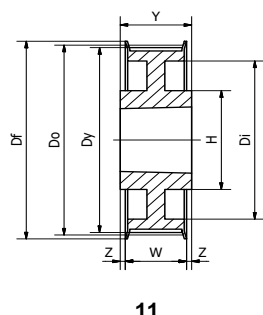
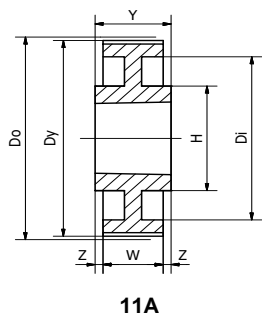
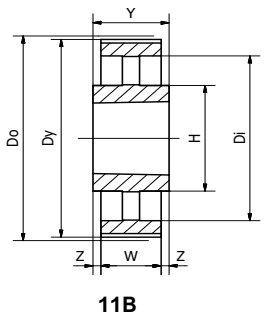
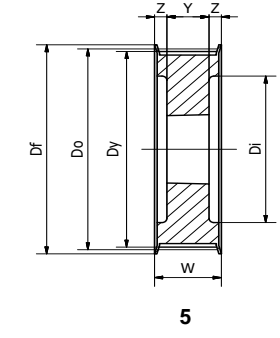
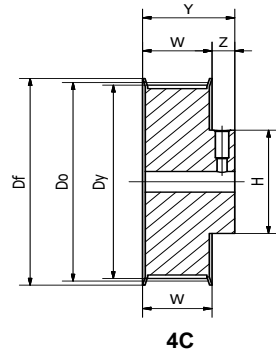


9A

F8M21																
Item no [Jens S]	Profile	Number of teeth	Belt width [mm]	Execution	Do [mm]	Dy [mm]	Df [mm]	U [mm]	W [mm]	H [mm]	Z [mm]	Y [mm]	Taper bush	Max bore [mm]	Weight [kg]	Material
F228M21	GTD	22	21	4	56,02	54,42	62	38	30	-	8	22	108	25	0,57	Cast iron
F258M21	GTD	25	21	4	63,66	62,06	67	45	30	-	8	22	1108	28	0,6	
F288M21	GTD	28	21	4	71,6	69,7	77	52	30	-	8	22	1108	28	0,75	
F308M21	GTD	30	21	4	76,39	74,79	84	58	30	-	5	25	1610	42	0,83	Steel
F328M21	GTD	32	21	4	81,49	79,89	88	63	30	-	5	25	1610	42	0,97	
F348M21	GTD	34	21	4	86,58	84,98	94	68	30	-	5	25	1610	42	0,12	
F368M21	GTD	36	21	4	91,67	90,07	98	73	30	-	5	25	1610	42	1,29	Cast iron
F388M21	GTD	38	21	4	96,77	95,17	104	78	30	-	5	25	1610	42	1,34	
F408M21	GTD	40	21	4	101,86	100,26	108	83	30	-	5	25	1610	42	1,5	
-	GTD	41	21	4	104,41	102,81	108	83	30	-	5	25	1610	42	-	
-	GTD	42	21	4	106,70	105,10	111	86	30	-	5	25	1610	42	-	
-	GTD	44	21	1	112,05	110,45	121	-	30	104	1	32	2012	50	-	
F458M21	GTD	45	21	1	114,59	112,99	121	-	30	104	1	32	2012	50	2,03	
F488M21	GTD	48	21	1	122,23	120,63	129	-	30	105	1	32	2012	50	2,24	
F508M21	GTD	50	21	1	127,32	125,72	131	-	30	105	1	32	2012	50	2,42	
F568M21	GTD	56	21	1	142,6	141	149	-	30	120	1	32	2012	50	3,2	
F608M21	GTD	60	21	1	152,79	151,19	158	-	30	105	7,5	45	2517	65	4,66	
F648M21	GTD	64	21	11	162,97	161,37	168	138	30	110	7,5	45	2517	65	5,28	
F758M21	GTD	75	21	11	190,99	189,39	202	165	30	120	7,5	45	2517	65	6,77	
F808M21	GTD	80	21	11	203,72	202,12	216	178	30	160	10,5	51	3020	75	7,61	
F908M21	GTD	90	21	11	229,18	227,58	-	146	30	160	10,5	51	3020	75	8,57	
F1128M21	GTD	112	21	11B	285,21	283,61	-	260	30	160	10,5	51	3020	75	12,5	
F1408M21	GTD	140	21	11B	356,51	354,91	-	331	30	160	10,5	51	3020	75	12,79	
-	GTD	190	21	11B	366,69	365,09	-	341	30	160	10,5	51	3020	75	-	

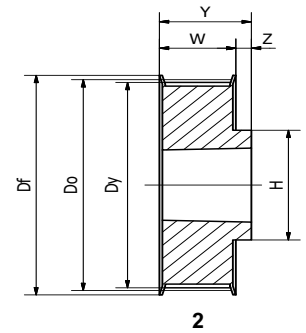


F8M36																
Item no [Jens S]	Profile	Number of teeth	Belt width [mm]	Execution	Do [mm]	Dy [mm]	Df [mm]	U [mm]	W [mm]	H [mm]	Z [mm]	Y [mm]	Taper bush	Max bore [mm]	Weight [kg]	Material
F258M36	GTD	25	36	4C	63,66	62,06	67	55	45	49	10	55	-	-	1,02	Steel
F288M36	GTD	28	36	4C	71,6	69,7	77	52	45	49	10	55	-	-	1,11	
F308M36	GTD	30	36	4	76,39	74,79	84	58	45	-	7	38	1615	42	1,22	
F328M36	GTD	32	36	4	81,49	79,89	88	60	45	-	7	38	1615	42	1,45	Cast iron
F348M36	GTD	34	36	4	86,58	84,98	94	66	45	-	7	38	1615	42	1,66	
F368M36	GTD	36	36	4	91,67	90,07	98	68	45	-	7	38	1615	42	1,9	
F388M36	GTD	38	36	4	96,77	95,17	104	75	45	-	7	38	1615	42	2,21	Cast iron
F408M36	GTD	40	36	5	101,86	100,26	108	80	45	-	6,5	32	2012	50	2,36	
-	GTD	41	36	5	104,41	102,81	108	80	45	-	6,5	32	2012	50	-	
-	GTD	42	36	5	106,70	105,10	111	80	45	-	6,5	32	2012	50	-	
-	GTD	44	36	5	112,05	110,45	121	90	45	-	6,5	32	2012	50	-	
F458M36	GTD	45	36	5	114,59	112,99	121	90	45	-	6,5	32	2012	50	3,07	
F488M36	GTD	48	36	5	122,23	120,63	129	98	45	-	6,5	32	2012	50	3,3	
F508M36	GTD	50	36	5	127,32	125,72	131	103	45	-	6,5	32	2012	50	3,58	
F568M36	GTD	56	36	6	142,6	141	149	-	45	-	-	45	2517	65	4,348	
F608M36	GTD	60	36	6	152,79	151,19	158	-	45	-	-	45	2517	65	5,3	
F648M36	GTD	64	36	7	162,97	161,37	168	138	45	120	-	45	2517	65	6,19	
-	GTD	72	36	7	183,35	181,75	191	158	45	120	-	45	2517	65	-	
F758M36	GTD	75	36	11	190,99	189,39	202	165	45	146	3	51	3020	75	8,72	
F808M36	GTD	80	36	11	203,72	202,12	216	178	45	146	3	51	3020	75	9,96	
F908M36	GTD	90	36	11A	229,18	227,58	-	204	45	146	3	51	3020	75	10,41	
F1128M36	GTD	112	36	11B	285,21	283,61	-	260	45	146	3	51	3020	75	14,01	
F1408M36	GTD	140	36	11B	356,51	354,91	-	331	45	146	3	51	3020	75	11,98	
F1688M36	GTD	168	36	11B	427,81	426,21	-	402	45	146	3	51	3020	75	23,91	
F1928M36	GTD	192	36	11B	488,92	487,32	-	462	45	146	3	51	3020	75	26,53	



F8M62

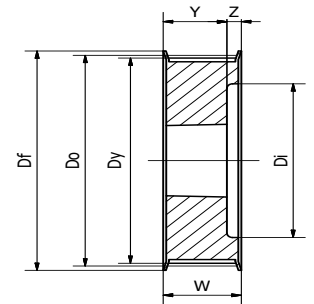
Item no [Jens S]	Profile	Number of teeth	Belt width [mm]	Execution	Do [mm]	Dy [mm]	Df [mm]	U [mm]	W [mm]	H [mm]	Z [mm]	Y [mm]	Taper bush	Max bore [mm]	Weight [kg]	Material
F308M62	GTD	30	62	4	76,39	74,79	84	58	72	-	17	38	1615	42	2,45	Steel
F328M62	GTD	32	62	4	81,49	79,89	88	60	72	-	17	38	1615	42	2,82	
F348M62	GTD	34	62	5	86,58	84,98	94	66	72	-	17	38	1615	42	3,17	Cast iron
F368M62	GTD	36	62	5	91,67	90,07	98	68	72	-	17	38	1615	42	3,52	
F388M62	GTD	38	62	5	96,7	95,17	104	75	72	-	17	38	1615	42	3,91	
F408M62	GTD	40	62	5	101,86	100,26	108	80	72	-	20	32	2012	50	3,76	Steel
-	GTD	41	62	5	104,41	102,81	108	80	72	-	20	32	2012	50	-	
-	GTD	42	62	5	106,95	105,35	111	80	72	-	20	32	2012	50	-	Cast iron
-	GTD	44	62	5	112,05	110,45	121	90	72	-	20	32	2012	50	-	
F458M62	GTD	45	62	5	114,59	112,99	121	92	72	-	20	32	2012	50	4,88	Cast iron
F488M62	GTD	48	62	5	122,23	120,63	129	100	72	-	13,5	45	2517	65	5,52	
F508M62	GTD	50	62	5	127,32	125,72	131	105	72	-	13,5	45	2517	65	6,03	
F568M62	GTD	56	62	5	142,6	141	149	120	72	-	13,5	45	2517	65	5,43	
F608M62	GTD	60	62	5	152,79	151,19	158	128	72	-	13,5	45	2517	65	6,33	
F648M62	GTD	64	62	5	162,97	161,37	168	138	72	-	13,5	45	2517	65	7,11	
F758M62	GTD	75	62	5	190,99	189,39	202	165	72	-	10,5	51	3020	75	9,99	
F808M62	GTD	80	62	8	203,72	202,12	216	178	72	146	10,5	51	3020	75	11,44	
F908M62	GTD	90	62	8A	229,18	227,58	-	204	72	146	10,5	51	3020	75	14,94	
F1128M62	GTD	112	62	8B	285,21	283,61	-	260	72	146	10,5	51	3020	75	14,94	
F1408M62	GTD	140	62	11B	356,51	354,91	-	331	72	146	2	76	3030	75	24,77	
F1688M62	GTD	168	62	11B	427,81	426,21	-	402	72	146	2	76	3030	75	28,39	
F1928M62	GTD	192	62	11B	488,92	487,32	-	462	72	146	2	76	3030	75	32,18	



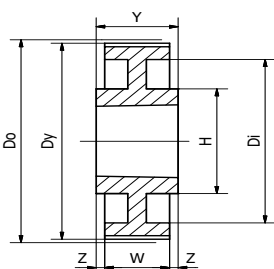
2

14M20

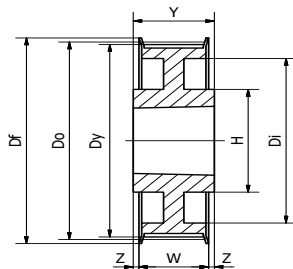
Item no [Jens S]	Profile	Number of teeth	Belt width [mm]	Execution	Do [mm]	Dy [mm]	Df [mm]	U [mm]	W [mm]	H [mm]	Z [mm]	Y [mm]	Taper bush	Max bore [mm]	Weight [kg]	Material
F2814M20	GTD	28	20	3	124,78	121,98	134	98	33	-	1	32	2012	50	2,46	Cast iron
F2914M20	GTD	29	20	3	129,23	126,43	134	100	33	-	1	32	2012	50	2,68	
F3014M20	GTD	30	20	3	133,69	130,89	142	100	33	-	1	32	2012	50	2,85	
F3214M20	GTD	32	20	3	142,6	139,8	150	104	33	-	1	32	2012	50	3,26	
F3414M20	GTD	34	20	2	151,52	148,72	158	-	33	125	12	45	2517	65	4,35	
F3614M20	GTD	36	20	2	160,43	157,53	166	-	33	125	12	45	2517	65	5,05	
F3814M20	GTD	38	20	2	169,34	166,54	177	-	33	125	12	45	2517	65	5,39	
F4014M20	GTD	40	20	2	178,25	175,45	186	-	33	125	12	45	2517	65	5,97	
F4414M20	GTD	44	20	2	196,08	193,28	209	-	33	155	18	51	3020	75	8,03	
F4814M20	GTD	48	20	2	213,9	211,11	216	-	33	155	18	51	3020	75	9,48	
F5014M20	GTD	50	20	2	222,82	220,02	232	-	33	155	18	51	3020	75	10,13	
F5614M20	GTD	56	20	11	249,55	246,76	261	207	33	146	9	51	3020	75	10,81	
F6014M20	GTD	60	20	11	267,38	264,58	274	224	33	146	9	51	3020	75	12,59	
F6414M20	GTD	64	20	11	285,21	282,41	288	243	33	146	9	51	3020	75	13,84	
F7214M20	GTD	72	20	11A	320,86	318,06	-	279	33	146	9	51	3020	75	15,51	
F8014M20	GTD	80	20	11B	356,51	353,71	-	314	33	146	9	51	3020	75	18,13	
F9014M20	GTD	90	20	11B	401,07	398,27	-	259	33	146	9	51	3020	75	19,47	
F11214M20	GTD	112	20	11B	499,11	496,31	-	457	33	146	9	51	3020	75	24,25	
F14014M20	GTD	140	20	11B	623,89	621,09	-	581	33	146	9	51	3020	75	20,96	
F16814M20	GTD	168	20	11B	748,66	745,87	-	705	33	146	9	51	3020	75	27,5	



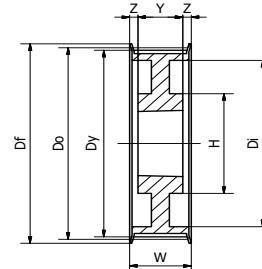
3



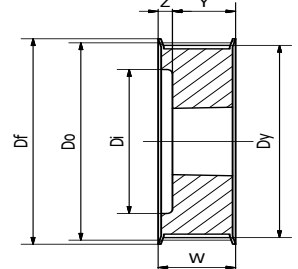
11A



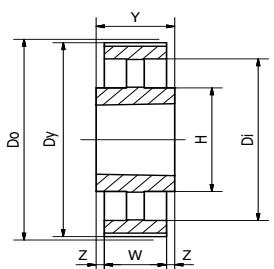
11



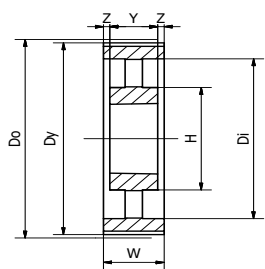
8



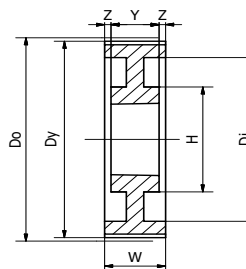
4



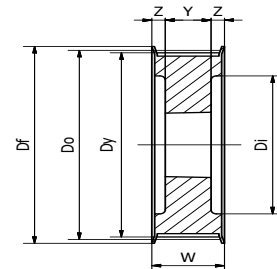
11B



8B



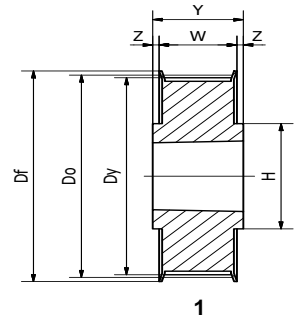
8A



5

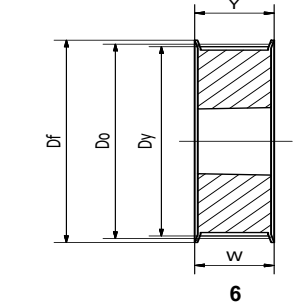
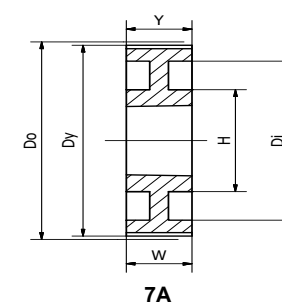
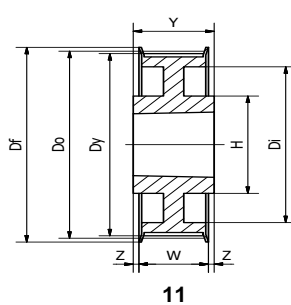
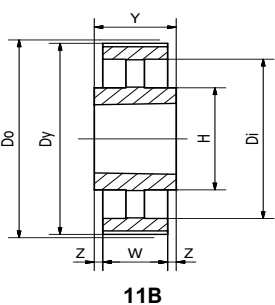
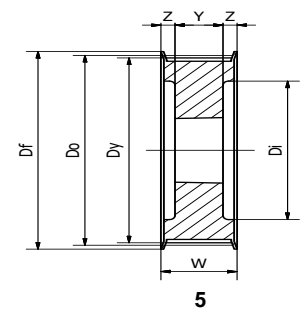
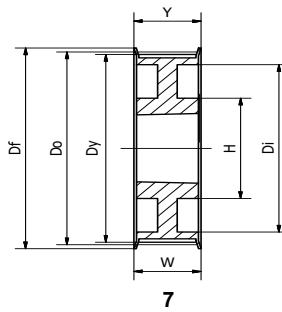
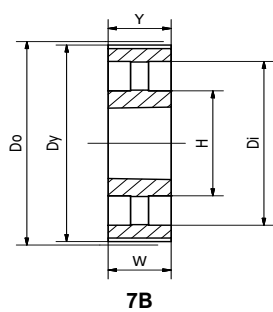
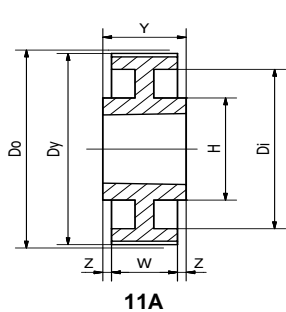
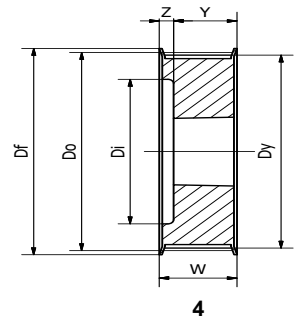
F14M37

Item no [Jens S]	Profile	Number of teeth	Belt width [mm]	Execution	Do [mm]	Dy [mm]	Df [mm]	U [mm]	W [mm]	H [mm]	Z [mm]	Y [mm]	Taper bush	Max bore [mm]	Weight [kg]	Material
F2814M37	GTD	28	37	5	124,78	121,98	134	98	51	-	9,5	32	2012	50	2,97	Cast iron
F3014M37	GTD	30	37	5	133,69	130,89	142	100	51	-	9,5	32	2012	50	3,81	
F3214M37	GTD	32	37	5	142,6	139,8	150	104	51	-	9,5	32	2012	50	4,53	
F3414M37	GTD	34	37	5	151,52	148,72	158	110	51	-	3	45	2517	65	5,06	
F3614M37	GTD	36	37	5	160,43	157,53	166	120	51	-	3	45	2517	65	5,92	
F3814M37	GTD	38	37	5	169,34	166,54	177	130	51	-	3	45	2517	65	6,51	
F4014M37	GTD	40	37	5	178,25	175,45	186	138	51	-	3	45	2517	65	7,31	
F4414M37	GTD	44	37	6	196,08	193,28	209	-	51	-	-	51	3020	75	9,44	
F4814M37	GTD	48	37	6	213,9	211,11	216	-	51	-	-	51	3020	75	11,44	
F5014M37	GTD	50	37	6	222,82	220,02	232	-	51	-	-	51	3020	75	12,62	
F5614M37	GTD	56	37	7	249,55	246,76	261	207	51	146	-	51	3020	75	12,7	
F6014M37	GTD	60	37	7	267,38	264,58	274	224	51	146	-	51	3020	75	14,23	
F6414M37	GTD	64	37	7	285,21	282,41	288	243	51	146	-	51	3020	75	15,58	
F7214M37	GTD	72	37	7A	320,86	318,06	-	279	51	146	-	51	3020	75	17,25	
F8014M37	GTD	80	37	7B	356,51	353,71	-	314	51	146	-	51	3020	75	20,32	
F9014M37	GTD	90	37	7B	401,07	398,27	-	359	51	146	-	51	3020	75	29,85	
F11214M37	GTD	112	37	11B	499,11	496,31	-	457	51	146	-	51	3020	75	27,43	
F14014M37	GTD	140	37	11B	623,89	621,09	-	581	51	146	-	51	3020	75	33,55	
F16814M37	GTD	168	37	11B	748,66	745,87	-	705	51	146	-	51	3020	75	64,5	
F19214M37	GTD	192	37	11B	855,61	852,82	-	812	51	178	19	89	3535	90	83,82	



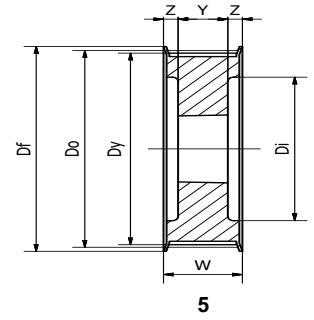
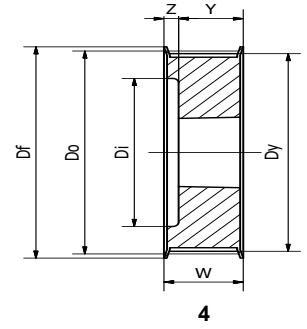
F14M66

Item no [Jens S]	Profile	Number of teeth	Belt width [mm]	Execution	Do [mm]	Dy [mm]	Df [mm]	U [mm]	W [mm]	H [mm]	Z [mm]	Y [mm]	Taper bush	Max bore [mm]	Weight [kg]	Material
F2814M68	GTD	28	68	5	124,78	121,98	134	98	84	-	19,5	45	2517	65	5,1	Cast iron
F2914M68	GTD	29	68	5	129,23	126,43	134	100	84	-	19,5	45	2517	65	5,55	
F3014M68	GTD	30	68	5	133,69	130,89	142	100	84	-	19,5	45	2517	65	5,85	
F3214M68	GTD	32	68	5	142,6	139,8	150	104	84	-	19,5	45	2517	65	6,05	
F3414M68	GTD	34	68	4	151,52	148,72	158	110	84	-	19,5	45	2517	65	6,25	
F3614M68	GTD	36	68	5	160,43	157,53	166	120	84	-	19,5	51	3020	75	6,68	
F3814M68	GTD	38	68	5	169,34	166,54	177	130	84	-	19,5	51	3020	75	7,46	
F4014M68	GTD	40	68	5	178,25	175,45	186	138	84	-	16,5	51	3020	75	7,81	
F4414M68	GTD	44	68	5	196,08	193,28	209	154	84	-	4	76	3030	75	11,54	
F4814M68	GTD	48	68	5	213,9	211,11	216	138	84	-	4	76	3030	75	13,74	
F5014M68	GTD	50	68	1	222,82	220,02	232	-	84	178	2,5	89	3535	90	16,63	
F5614M68	GTD	56	68	1	249,55	246,76	261	-	84	178	2,5	89	3535	90	21,15	
F6014M68	GTD	60	68	11	267,38	264,58	274	224	84	178	2,5	89	3535	90	24,28	
F6414M68	GTD	64	68	11	285,21	282,41	288	243	84	178	2,5	89	3535	90	27,86	
F7214M68	GTD	72	68	11A	320,86	318,06	-	279	84	178	2,5	89	3535	90	25,74	
F8014M68	GTD	80	68	11B	356,51	353,71	-	314	84	178	2,5	89	3535	90	29,86	
F9014M68	GTD	90	68	11B	401,07	398,27	-	359	84	178	2,5	89	3535	90	31,24	
F11214M68	GTD	112	68	11B	499,11	496,31	-	453	84	178	2,5	89	3535	90	39,25	
F14014M68	GTD	140	68	11B	623,89	621,09	-	581	84	178	2,5	89	3535	90	40,87	
F16814M68	GTD	168	68	11B	748,66	745,87	-	705	84	178	2,5	89	3535	90	73,3	
F19214M68	GTD	192	68	11B	855,61	852,82	-	812	84	215	9	102	4040	100	94,21	



F14M90

Item no [Jens S]	Profile	Number of teeth	Belt width [mm]	Execution	Do [mm]	Dy [mm]	Df [mm]	U [mm]	W [mm]	H [mm]	Z [mm]	Y [mm]	Taper bush	Max bore [mm]	Weight [kg]	Material
F3214M90	GTD	32	90	4C	142,6	139,8	150		106	110	15	121	-	-	6,05	Cast iron
F3414M90	GTD	34	90	4	151,52	148,72	158	110	106	-	30,5	45	2517	65	6,25	
F3614M90	GTD	36	90	5	160,43	157,53	166	120	106	-	27,5	51	3020	75	8,18	
F3814M90	GTD	38	90	5	169,34	166,54	177	130	106	-	27,5	51	3020	75	9,73	
F4014M90	GTD	40	90	5	178,25	175,45	186	138	106	-	27,5	51	3020	75	10,29	
F4414M90	GTD	44	90	5	196,08	193,28	209	154	106	-	15	76	3030	75	11,92	
F4814M90	GTD	48	90	5	213,9	211,11	216	172	106	-	15	76	3030	75	16,76	
F5014M90	GTD	50	90	5	222,82	220,02	232	181	106	-	8,5	89	3535	90	18,38	
F5614M90	GTD	56	90	5	249,55	246,76	261	207	106	-	8,5	89	3535	90	23,46	
F6014M90	GTD	60	90	5	267,38	264,58	274	225	106	-	8,5	89	3535	90	26,53	
F6414M90	GTD	64	90	8	285,21	282,41	288	243	106	178	8,5	89	3535	90	30,3	
F7214M90	GTD	72	90	8A	320,86	318,06	-	279	106	178	8,5	89	3535	90	26,36	
F8014M90	GTD	80	90	8B	356,51	353,71	-	314	106	178	8,5	89	3535	90	35,61	
F9014M90	GTD	90	90	8B	401,07	398,27	-	359	106	178	8,5	89	3535	90	41,9	
F11214M90	GTD	112	90	8B	499,11	496,31	-	457	106	178	8,5	89	3535	90	70,89	
F14014M90	GTD	140	90	8B	623,89	621,09	-	582	106	215	2	102	4040	100	74,86	
F16814M90	GTD	168	90	11B	748,66	745,87	-	705	106	215	2	102	4040	100	109,24	
F19214M90	GTD	192	90	11B	855,61	852,82	-	812	106	215	2	102	4040	100	126,05	



F14M125

Item no [Jens S]	Profile	Number of teeth	Belt width [mm]	Execution	Do [mm]	Dy [mm]	Df [mm]	U [mm]	W [mm]	H [mm]	Z [mm]	Y [mm]	Taper bush	Max bore [mm]	Weight [kg]	Material
F3814M125	GTD	38	125	4	169,34	166,54	177	130	141	-	32,5	76	3030	75	11,74	Cast iron
F4014M125	GTD	40	125	4	178,25	175,45	186	38	141	-	32,5	76	3030	75	12,23	
F4414M125	GTD	44	125	5	196,08	193,28	209	154	141	-	26	89	3535	90	14,46	
F4814M125	GTD	48	125	5	213,9	211,11	216	172	141	-	26	89	3535	90	14,7	
F5014M125	GTD	50	125	5	222,82	220,02	232	180	141	-	26	89	3535	90	20,93	
F5614M125	GTD	56	125	5	249,55	246,76	261	207	141	-	26	89	3535	90	25,91	
F6014M125	GTD	60	125	5	267,38	264,58	274	224	141	-	19,5	102	4040	100	30,92	
F6414M125	GTD	64	125	5	285,21	282,41	288	243	141	-	19,5	102	4040	100	35,34	
F7214M125	GTD	72	125	8A	320,86	318,06	-	279	141	215	19,5	102	4040	100	37,71	
F8014M125	GTD	80	125	8A	356,51	353,71	-	314	141	215	19,5	102	4040	100	42,02	
F9014M125	GTD	90	125	8B	401,07	398,27	-	359	141	215	19,5	102	4040	100	51,29	
F11214M125	GTD	112	125	8B	499,11	496,31	-	457	141	267	7	127	5050	125	65,64	
F14014M125	GTD	140	125	8B	623,89	621,09	-	581	141	267	7	127	5050	125	67,9	
-	GTD	144	125	8B	641,71	638,92	-	600	141	267	7	127	5050	125	-	
F16814M125	GTD	168	125	8B	748,66	745,87	-	705	141	267	7	127	5050	125	120,66	
F19214M125	GTD	192	125	8B	855,61	852,82	-	812	141	395	7	127	6050	125	142,39	
-	GTD	216	125	8B	962,57	959,77	-	920	141	395	7	127	6050	125	-	

